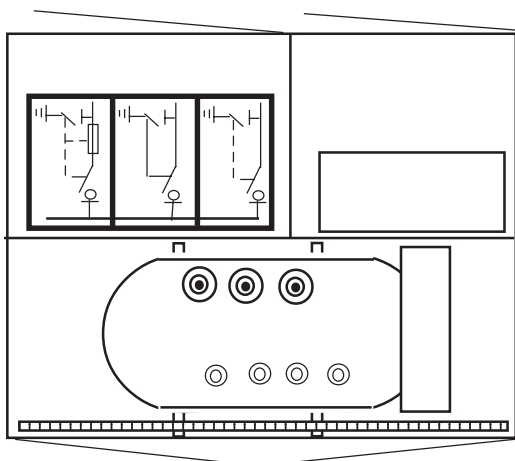
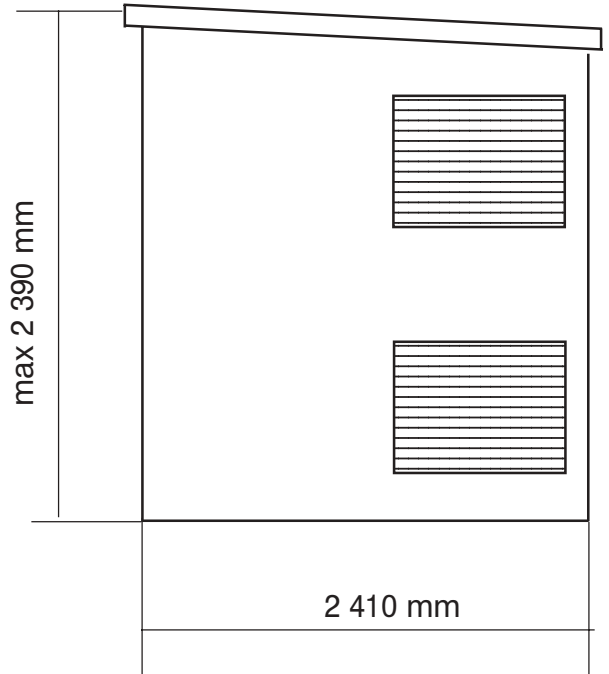
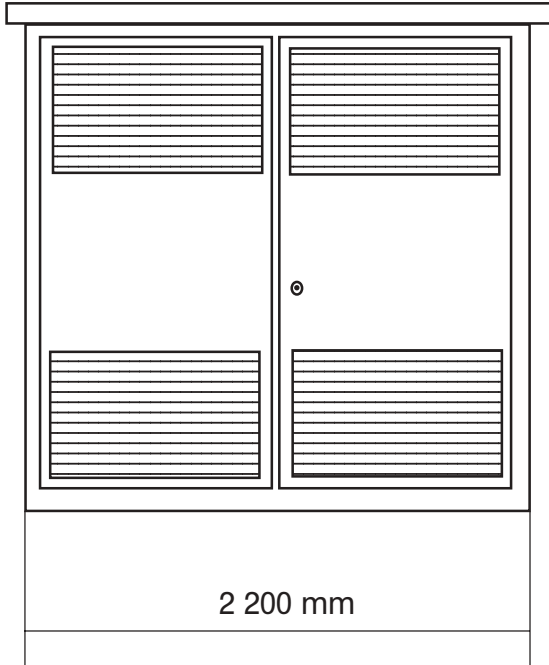


Transformer Substation PK RMU 10 (20)/0.4 kV up to 800 kVA
Single Line Diagram

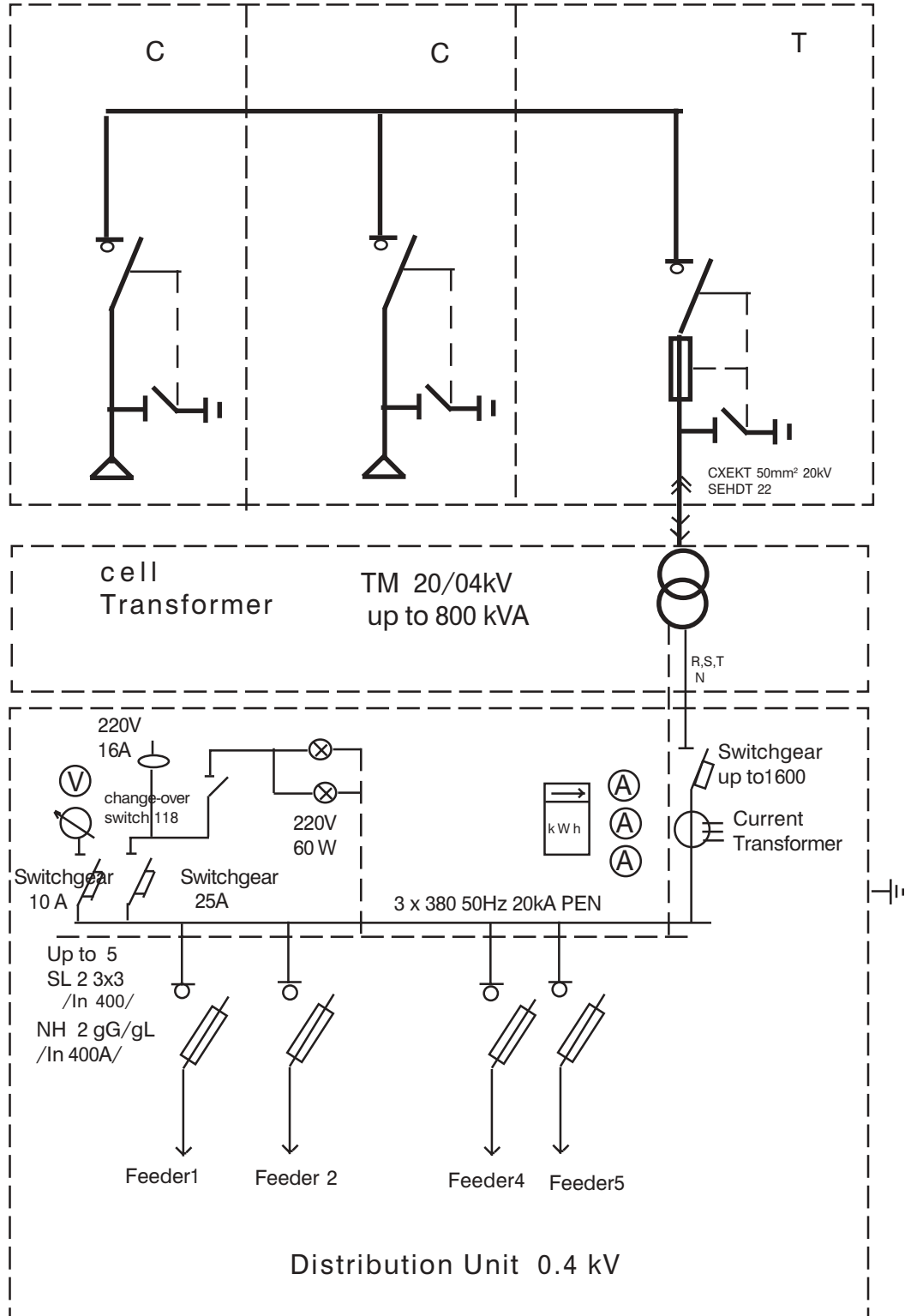


1. Transformer Section
Power Oil Transformer
TM 20/0,4kV- up to 800kVA
 2. LV panel - 0,4/0,231kV
 3. MV section 12 , 24 kV 630A 20,16 kA
- RMU with functions:
- Input/Output?Transf.Protection

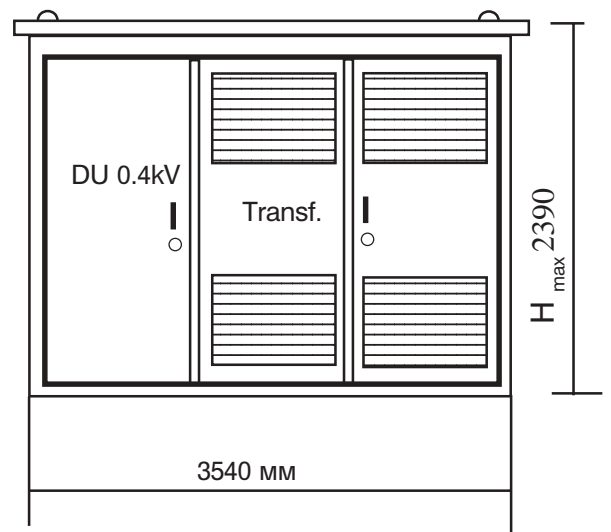
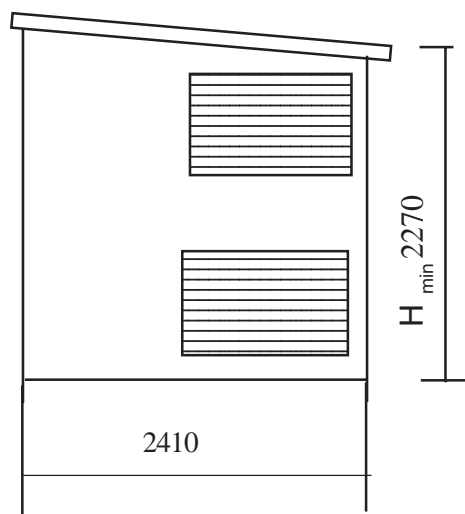
Area- 5,31sq.m.
Weight - 5000kg

Transformer Substation PK RMU 10(20)/0.4 kV up to 800kVA
Single Line Diagram

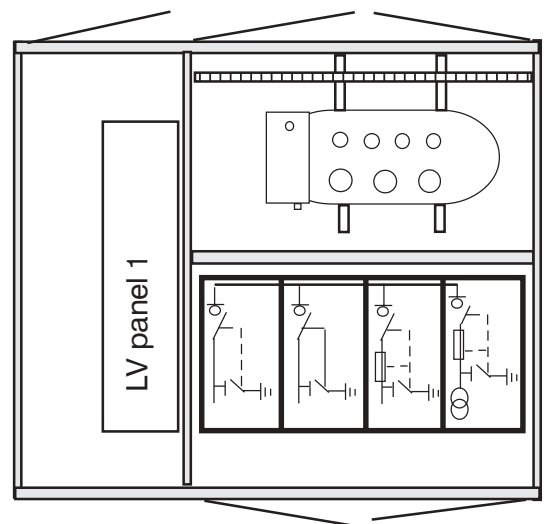
RMU -SF 6 12, 24 kV 630A 20,16 kA



Transformer Substation P 20kV / up to 800 kVA

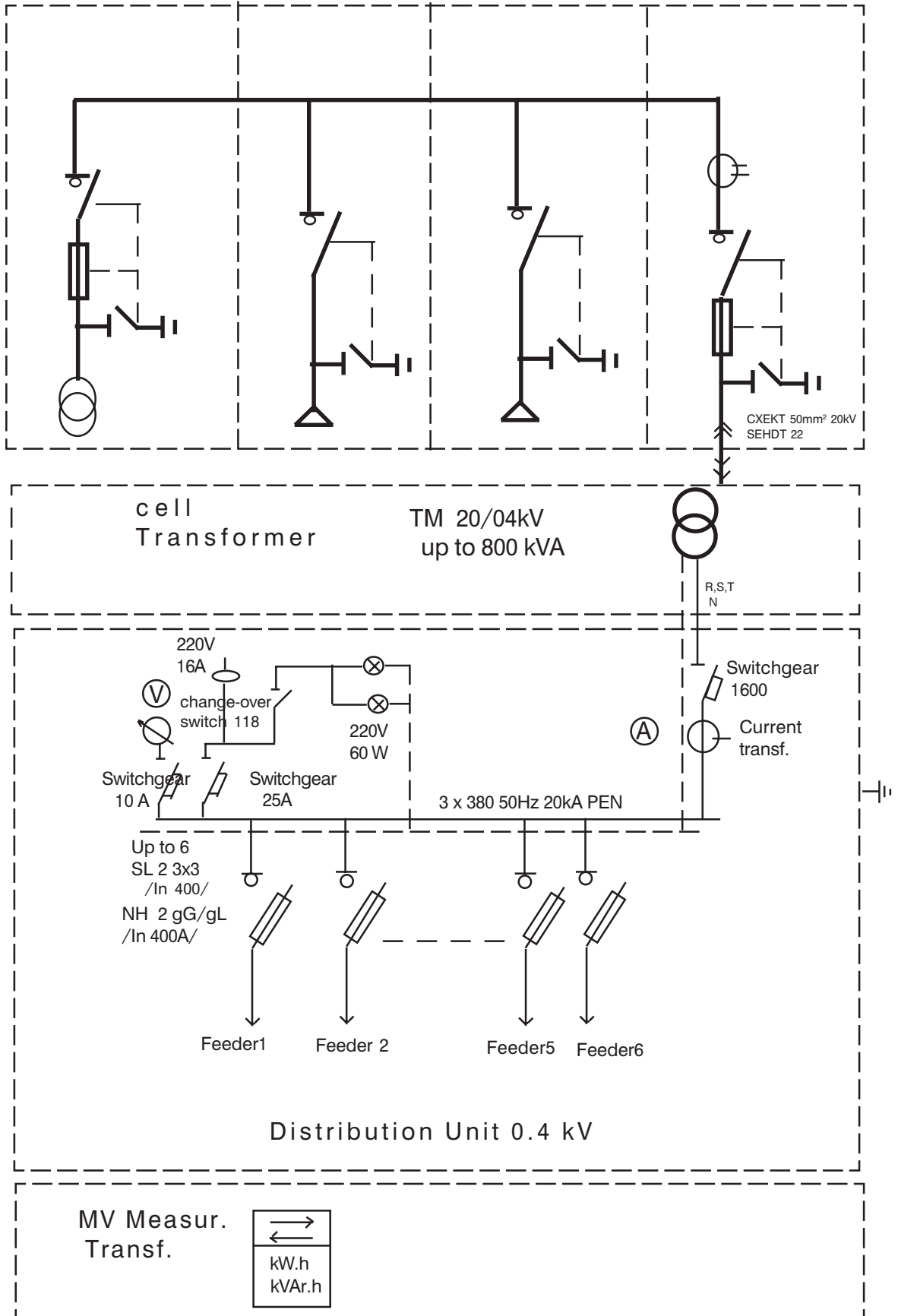


1. Transformer Section
Power Oil Transformer
TM 20/0,4kV- up to 800kVA
 2. LV panel - 0,4/0,231kV
 3. MV Section 12 , 24 kV 630A 20,16 kA
RMU with functions:
Input/Output/Transformer protection
and MV measurement
- Area- 8,75sq.m.**
Weight- 7400kg

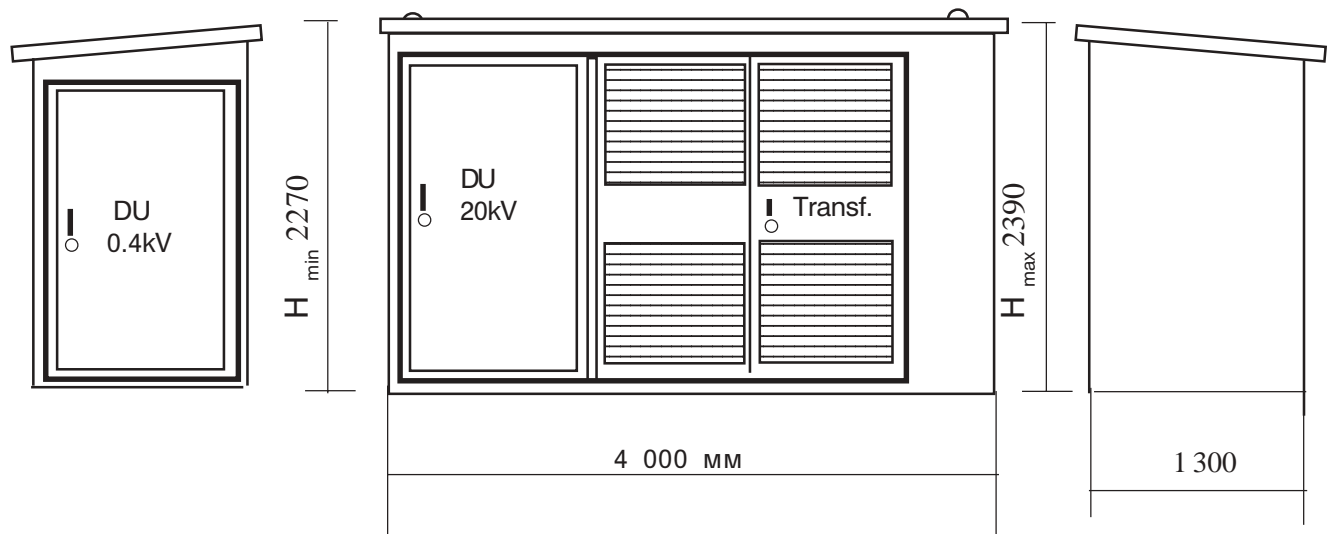


Transformer Substation PK RMU 10(20)/0.4 kV up to 800 kVA
 Single Line Diagram

RMU -SF 6 12, 24 kV 630A 20,16 kA

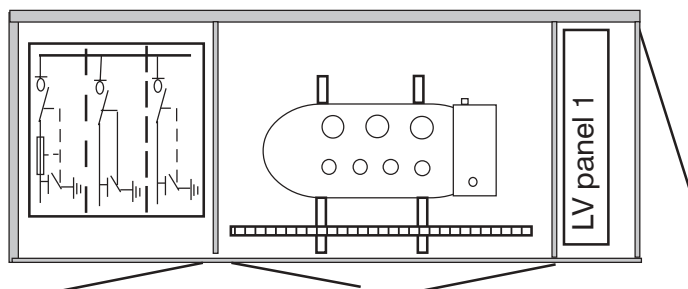


Transformer Substation P-KRU-VEI 10,20 /0.4kV до 800kVA
General View

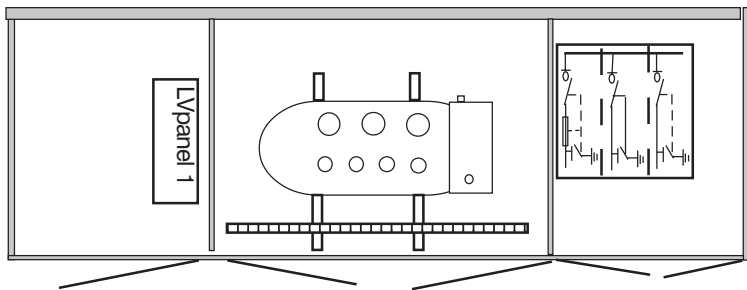
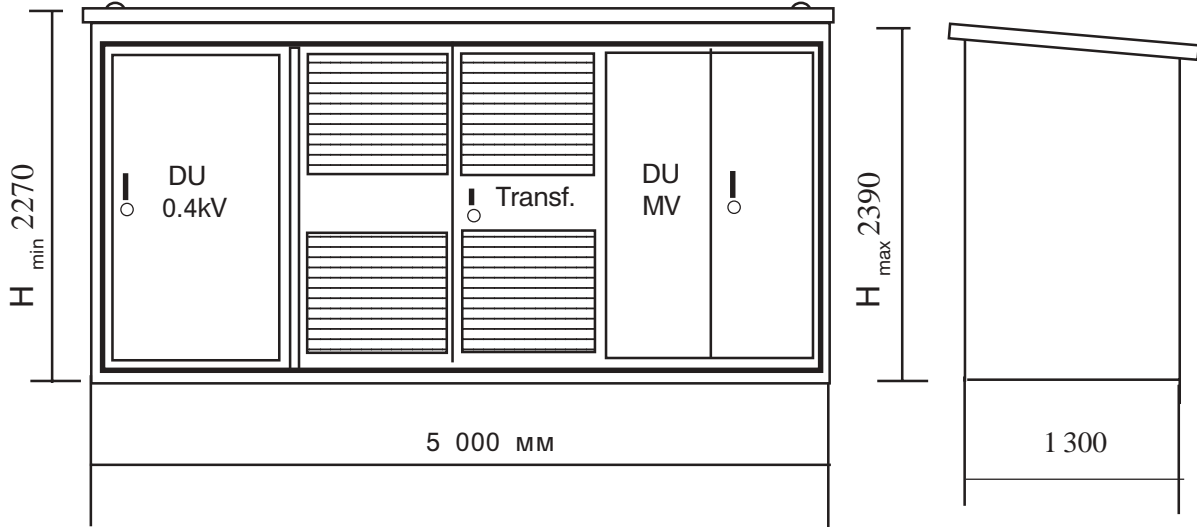


1. Transformer Section - 1
Power Oil Transformer
TM 10,20/0,4kV- up to 800kVA
2. MV and LV Section
3. DU- 0,4/0,231kV
4. RMU SF-6 with functions:
-Input/Output -2
-Transf.protection -1

Area- 5,2 sq.m.



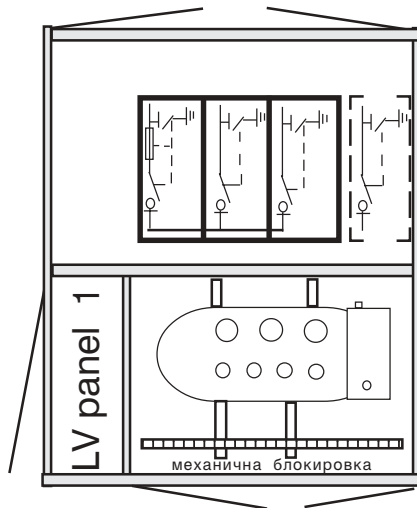
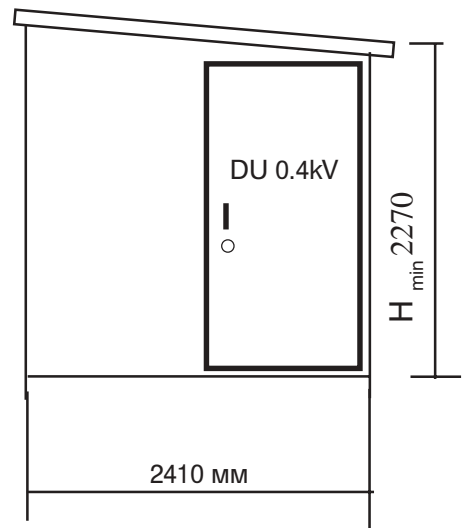
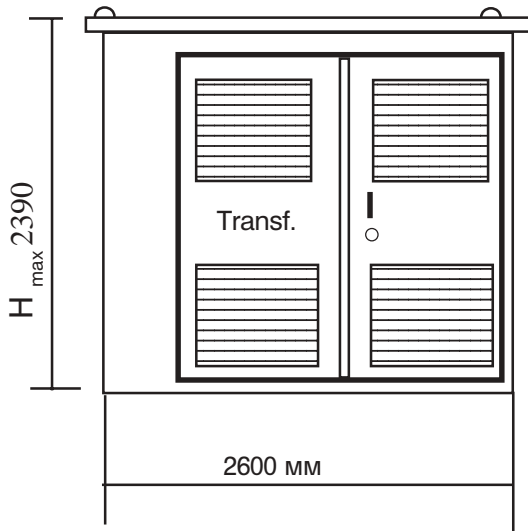
Transformer Substation - P-EO-RMU-4 10,20/0.4kV up to 800 kVA
General view



1. Transformer Section - 1
Power Oil Transformer
TM 10,20/0,4kV- up to 800kVA
2. MV and LV section
3. DU- 0,4/0,231kV
4. RMU SF-6 with functions:
 - Input/Output -2
 - Transf. protection -1

Area- 6,5 sq.m.

Transformer Substation - P- RMU- R 10,20/0.4 kV up to 800 kVA
General View

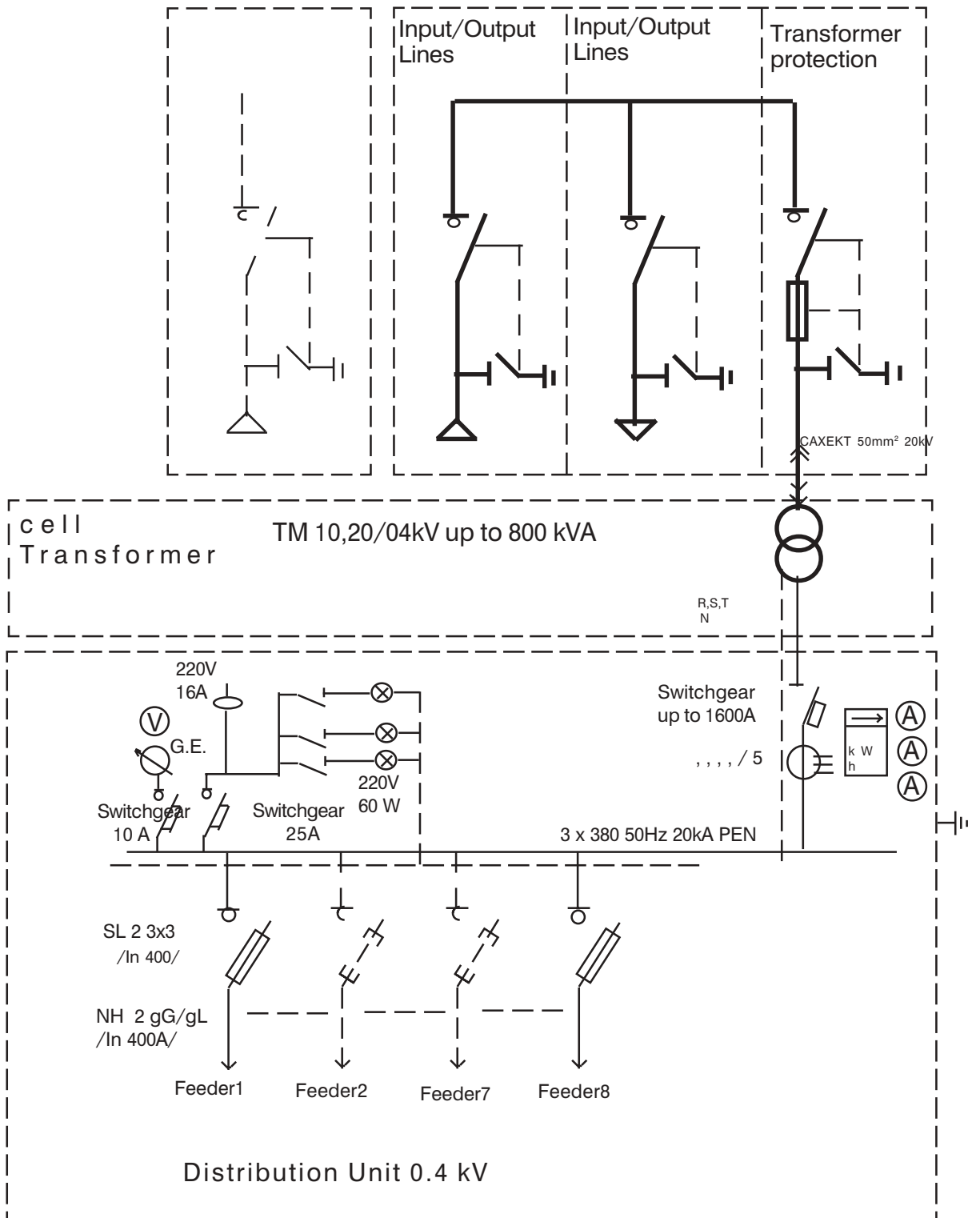


1. Transformer Section - 1
Power Oil Transformer
TM 10,20/0,4kV- up to 800kVA
2. MV and LV section
3. DU- 0,4/0,231kV
4. RMU SF-6 with functions:
 - Input/Output - up to 4 or
 - Input/Output - 2 and 1 unit 20kV measurm.
 - Transformer protection - 1

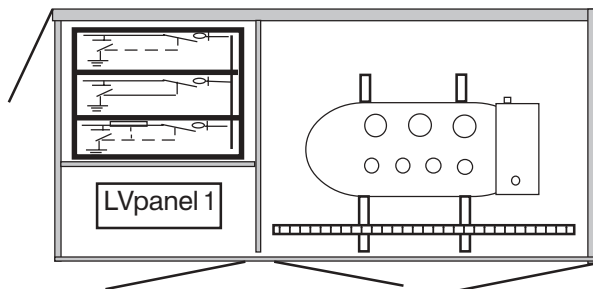
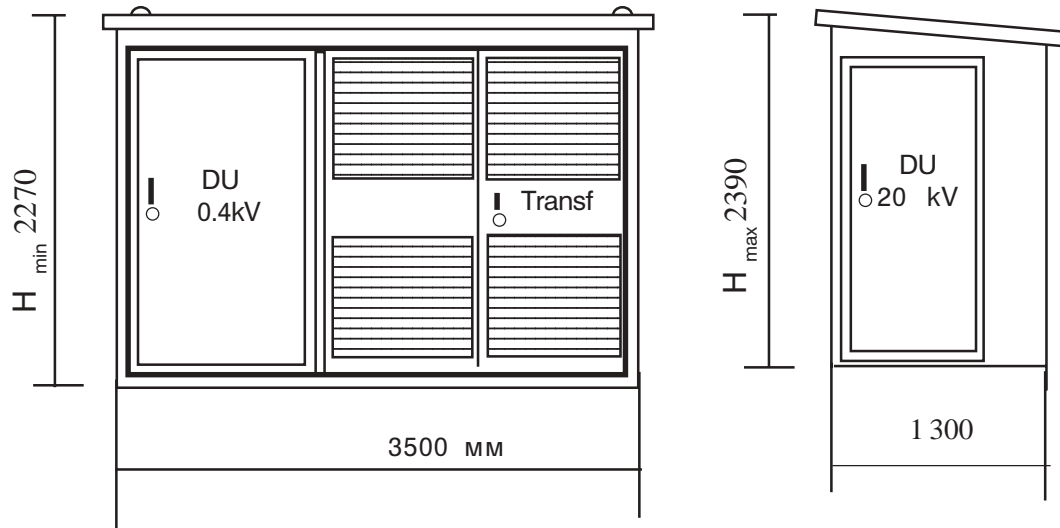
Area- 6,27 sq.m.

Transformer Substation-P-RMU- R 10,20/0.4 kV up to 800 kVA
Single Line Diagram

RMU -SF-6 12,24 kV 400,630A 20,16 kA



Transformer Substation - P- KRU 10,20/0.4kV up to 630 kVA
General View

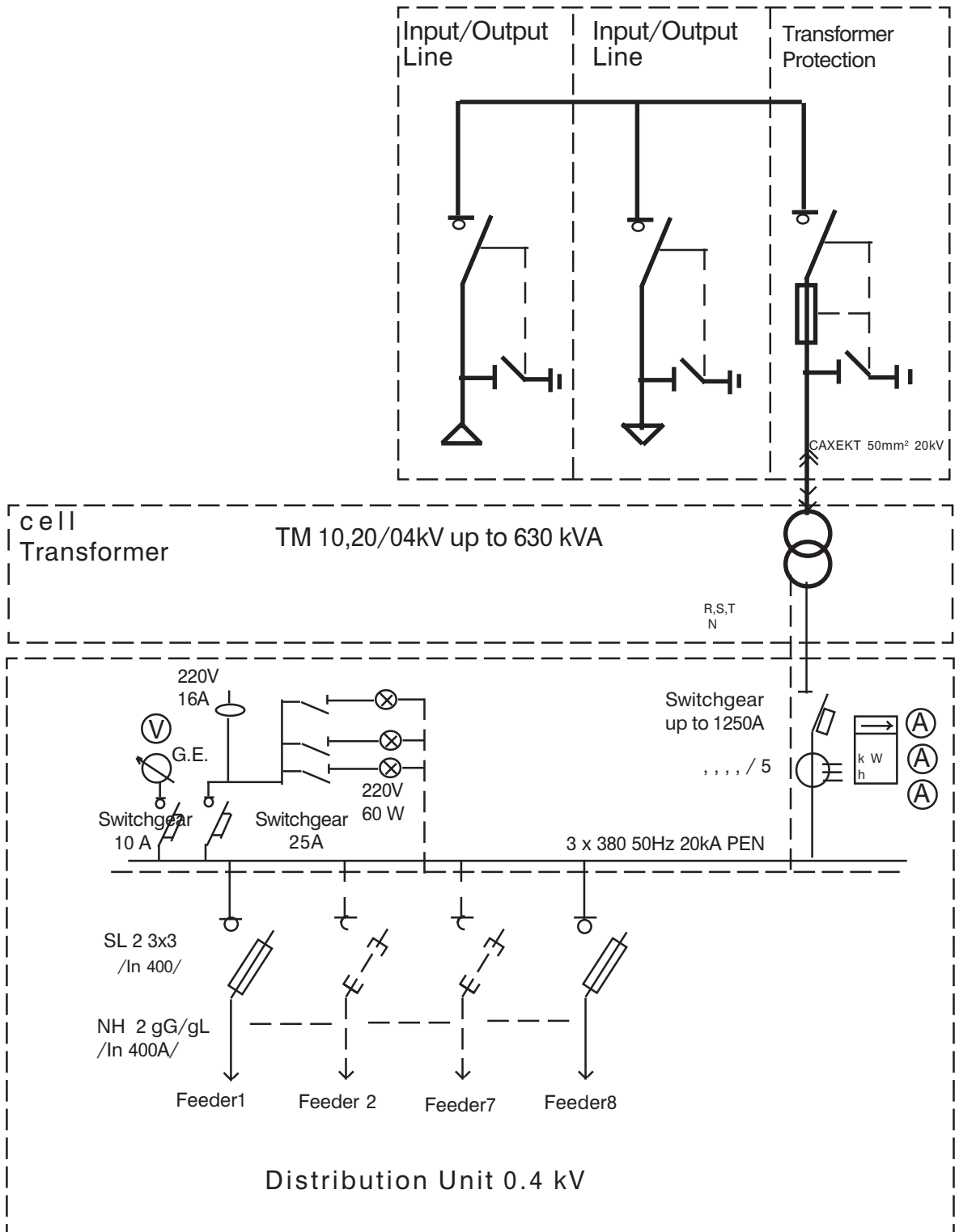


- 1. Transformer Section - 1
Power Oil Transformer
TM 10,20/0,4kV- up to 630kVA
- 2. MV and LV section
- 3. DU- 0,4/0,231kV
- 4. RMU SF-6 8DJ10 with functions:
 - Input/Output - 2
 - Transf. protection - 1

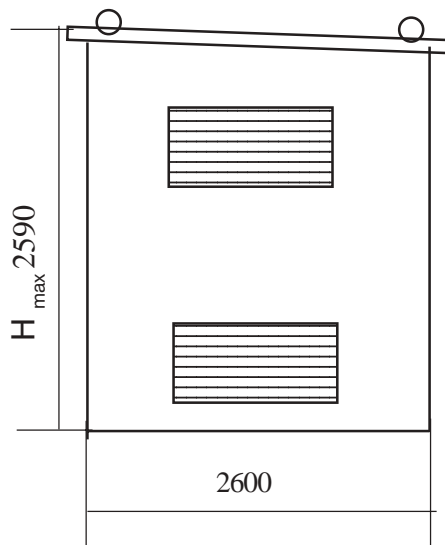
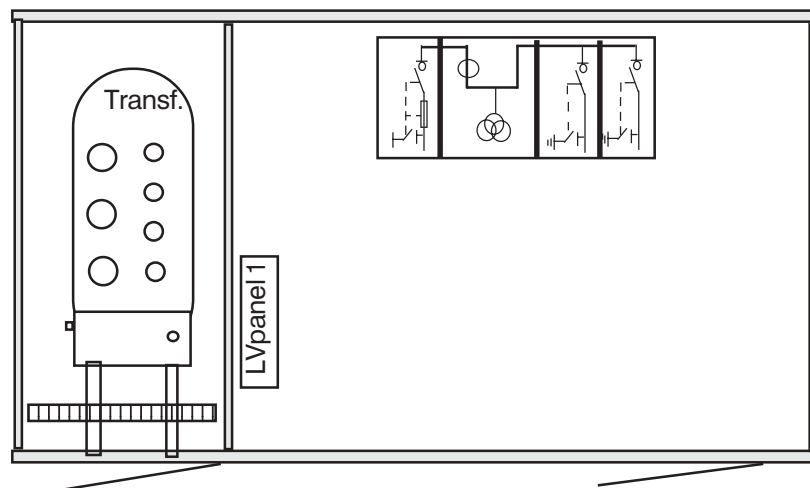
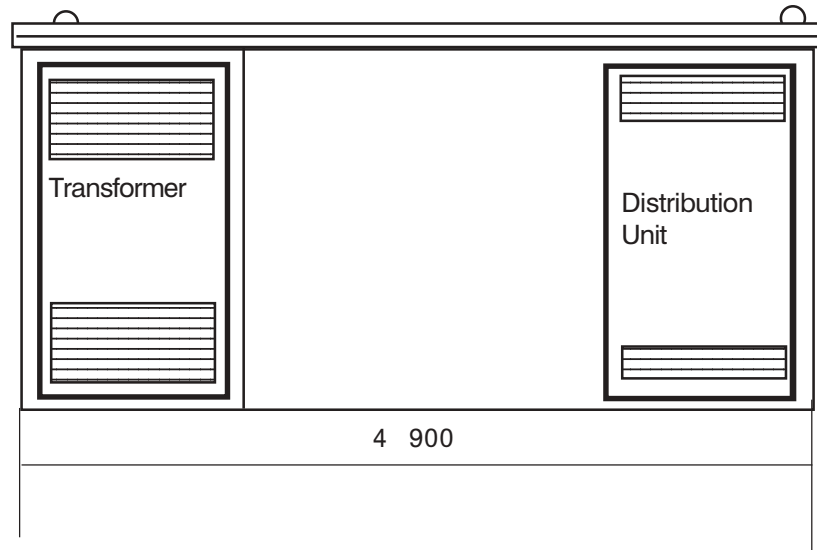
Area- 4,55 sq.m.

Transformer Substation- P- KRU 10/0.4 kV up to 630 kVA
 Single Line Diagram

RMU -SF-6 8DJ10
 12,24 kV 400,630A 20,16 kA



Transformer Substation- P 1T-RMU -6 20/0.4 kV up to 1000kVA
General View



1. Transformer Section - 1
Power Oil Transformer
TM 10,20/0,4kV- up to 1000kVA
2. MV and LV section
3. Distribution Unit- 0,4/0,231kV
4. RMU SF-6 with functions:
 - Input/Output -2
 - MV measurement-1
 - Transformer protection -1

Area- 12,74 sq.m.

Transformer Substation - P- 1T- RMU- 6 10/0.4 kV up to 1000 kVA
 Single Line Diagram
 RMU -SF-6 12,24 kV 400,630A 20,16 kA

