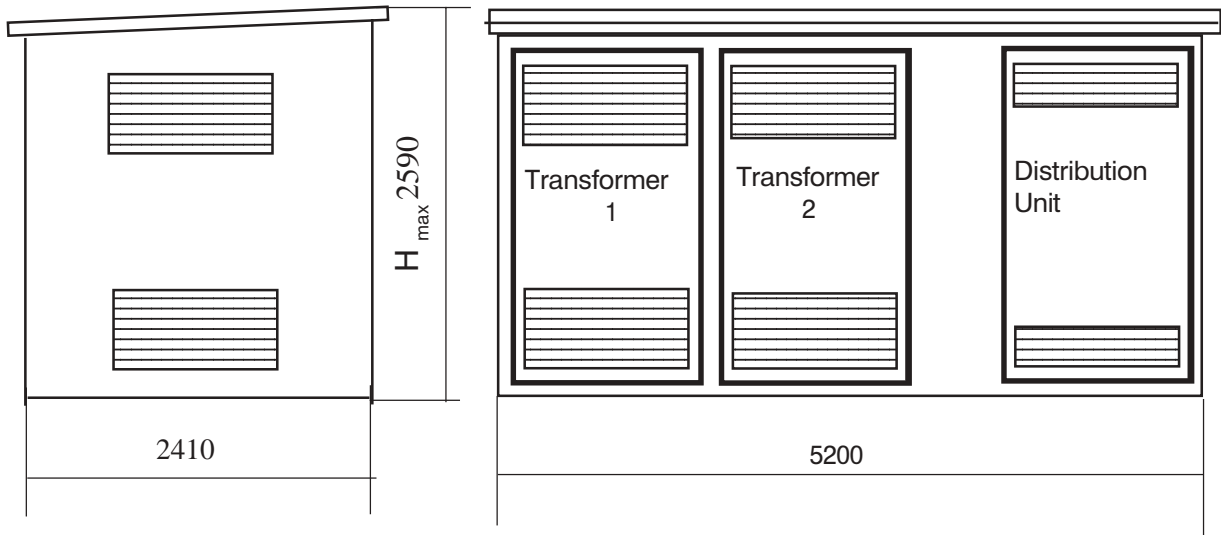
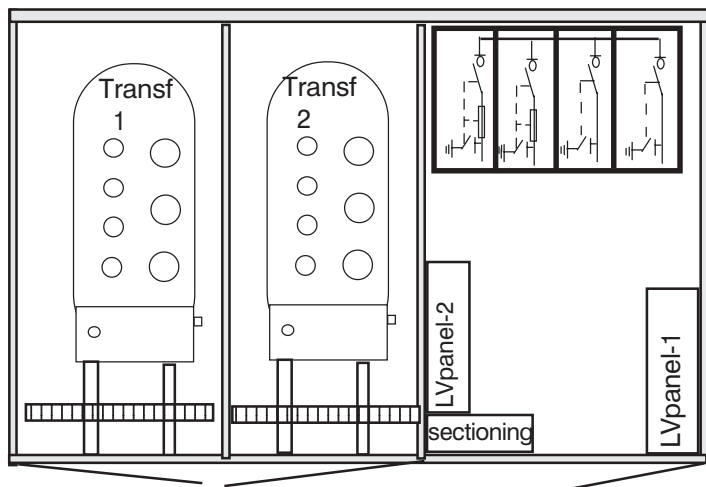


Transformer Substation - P- 2T- RMU - 4 10,20/0,4kV up to 2x800kVA

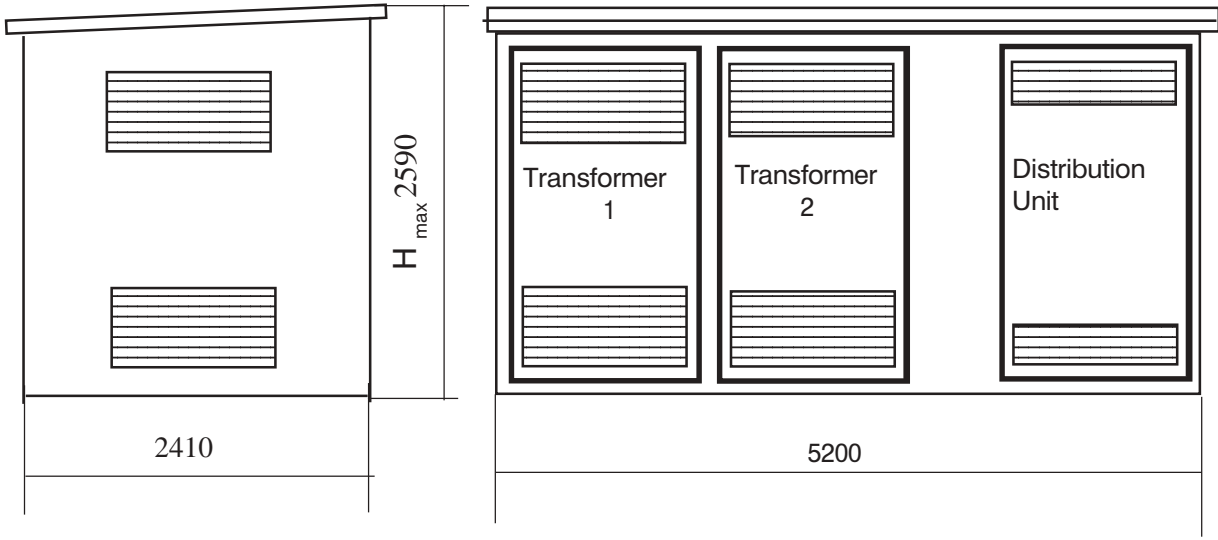


1. Transformer Sections - 2  
Power Oil Transformer  
TM 10,20/0,4kV- up to 800kVA
2. MV and LV Sections
3. Distribution Unit- 0,4/0,231kV
4. RMU SF-6 with functions:
  - Input/Output - 2pcs.
  - Transf. Protection - 2pcs.

Area - 12,53 sq.m.

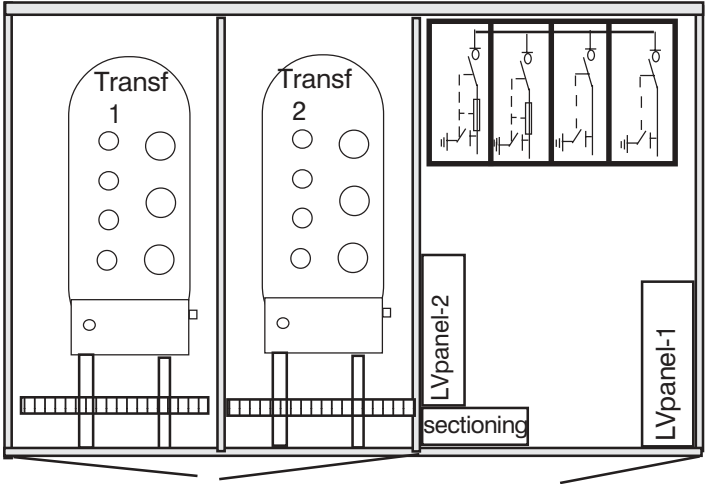


Transformer Substation - P- 2T- RMU - 4 10,20/0,4kV up to 2x800kVA



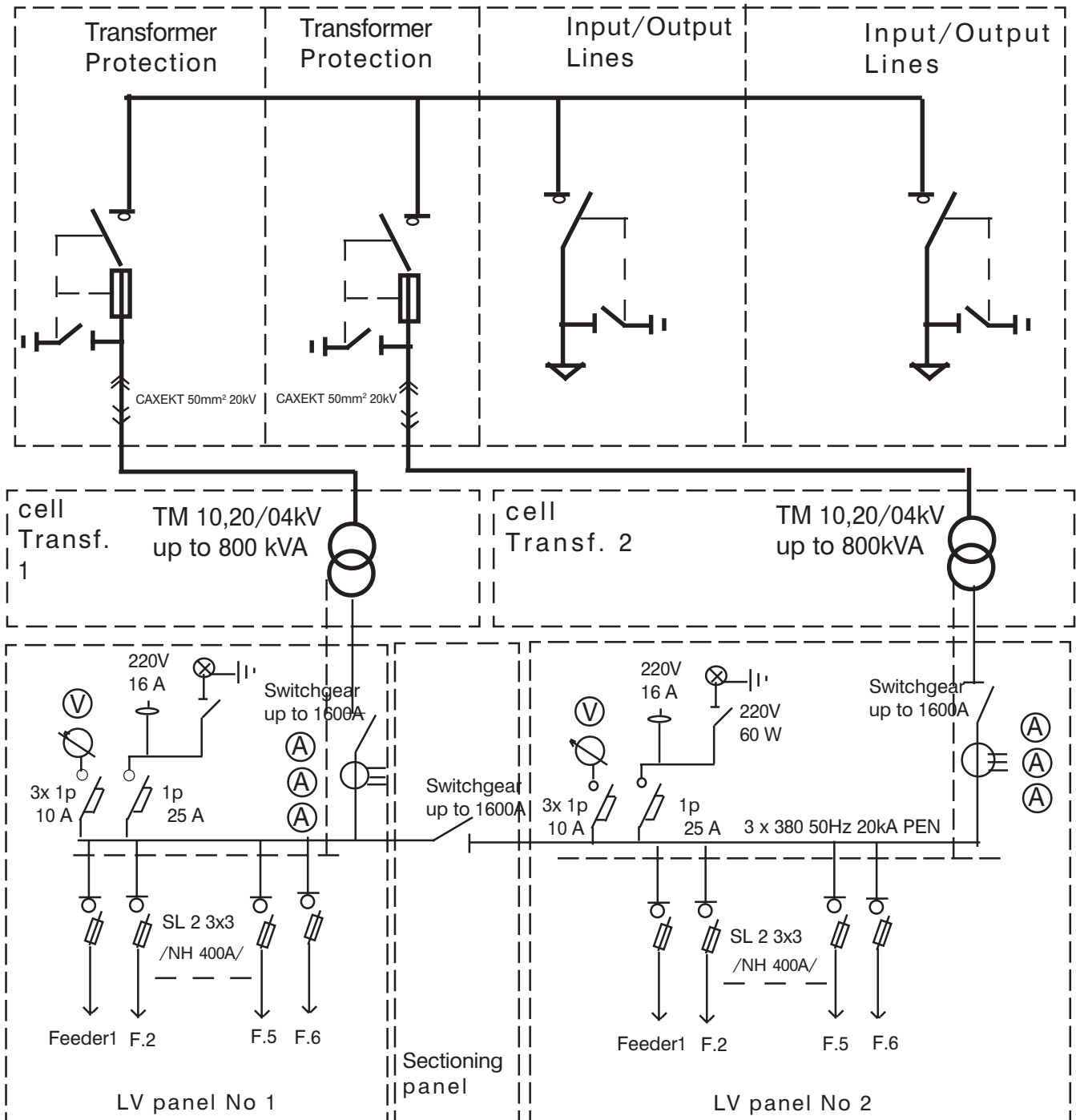
- 1. Transformer Sections - 2  
Power Oil Transformer  
TM 10,20/0,4kV- up to 800kVA
- 2. MV and LV Sections
- 3. Distribution Unit- 0,4/0,231kV
- 4. RMU SF-6 with functions:
  - Input/Output - 2pcs.
  - Transf. Protection - 2pcs.

Area - 12,53 sq.m.

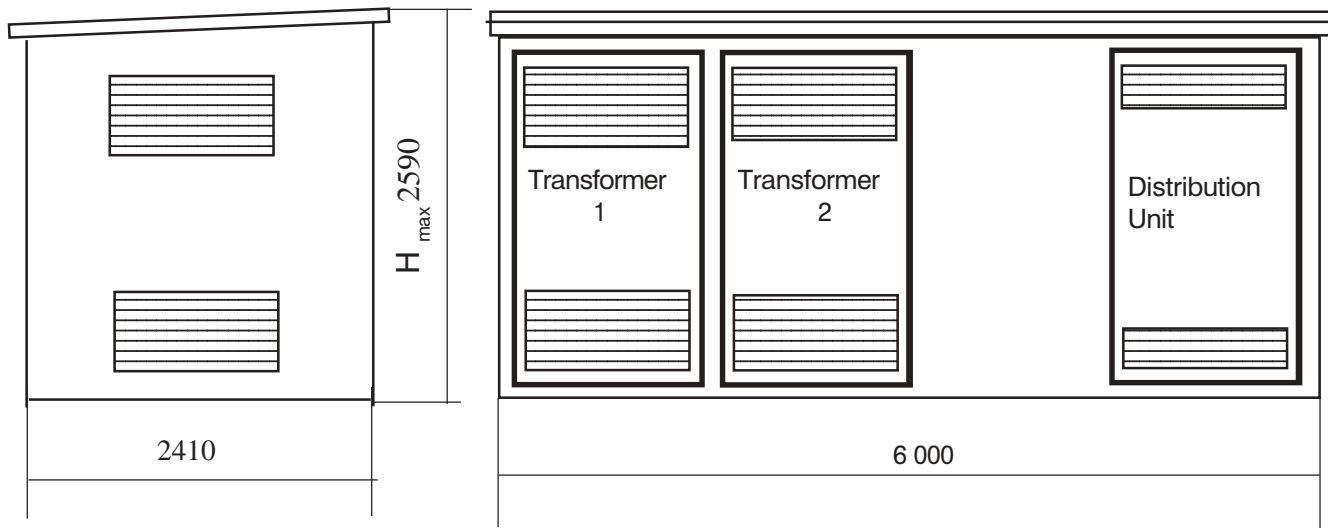


Transformer Substation- P- 2T- RMU- 4 10,20/0.4kV; up to 2 x800kVA

RMU -SF-6 10, 24 kV ;400,630A ;20,16 kA

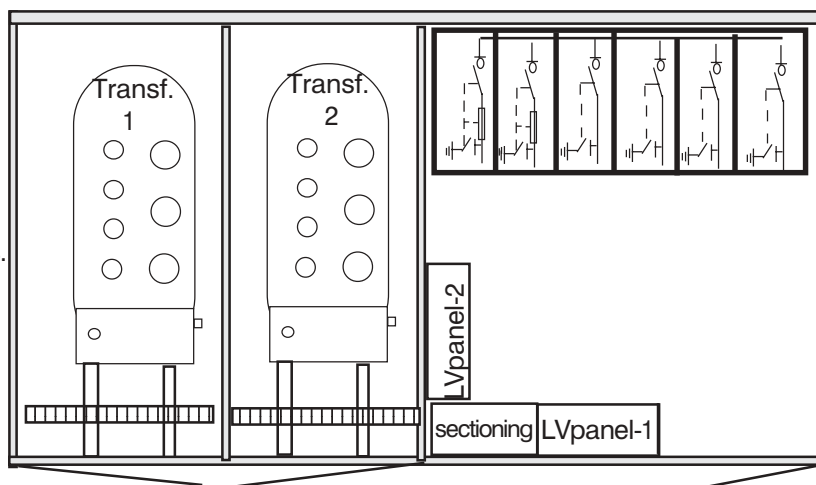


# Transformer Substation- P- 2T- RMU- 5 10,20/0,4kV up to 2x800kVA



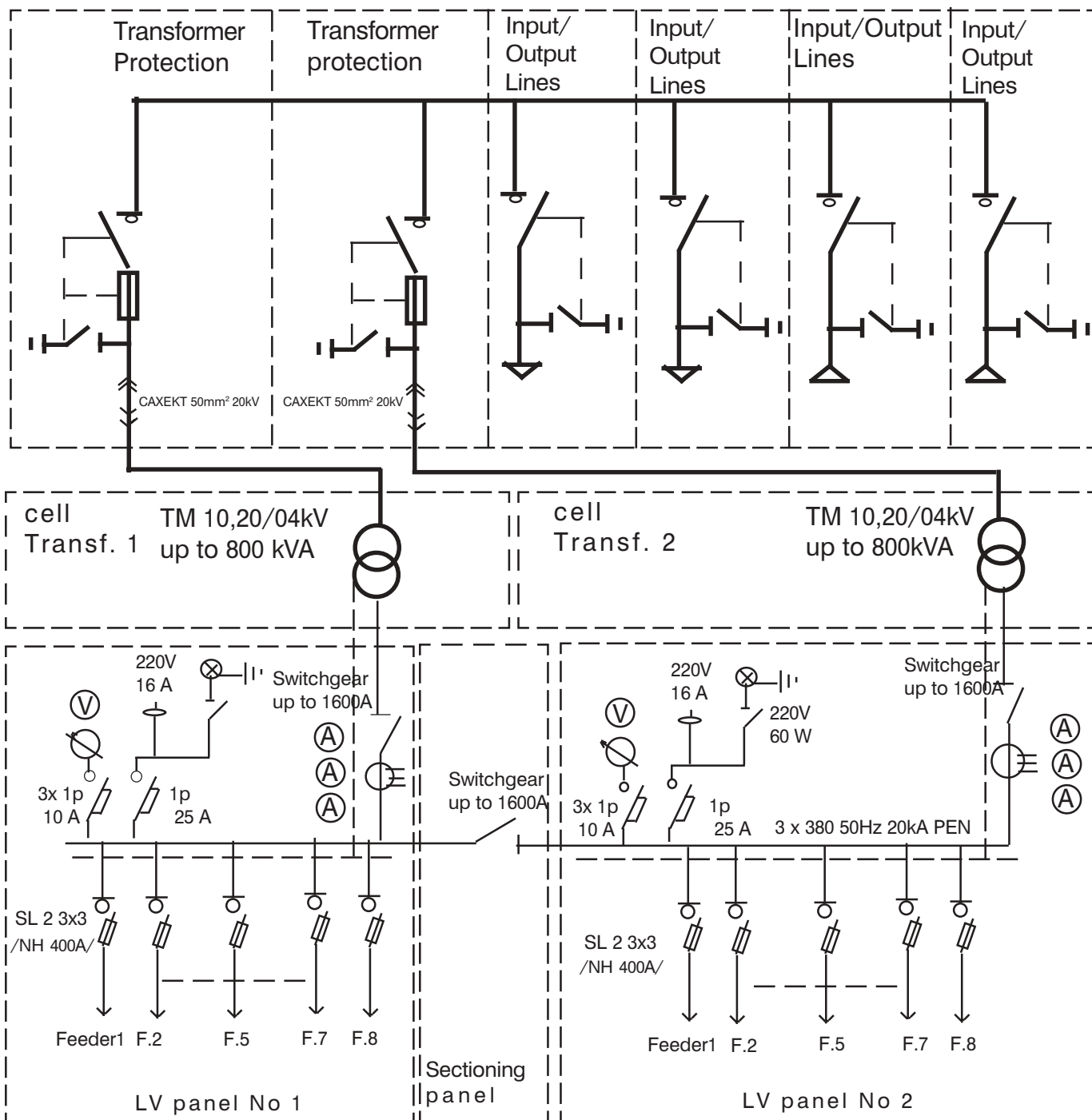
- 1. Transformer Sections - 2  
Power Oil Transformer  
TM 10,20/0,4kV- up to 800kVA
- 2. LV and MV Sections
- 3. Distribution Unit- 0,4/0,231kV
- 4. RMU SF-6 with functions:
  - Input/Output - up to 4 pcs.
  - Transformer Protection - 2pcs.

Area- 14,46 sq.m.

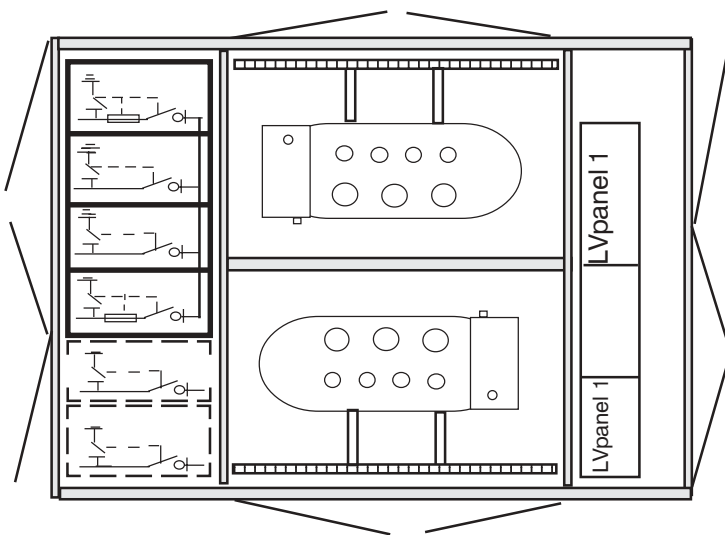
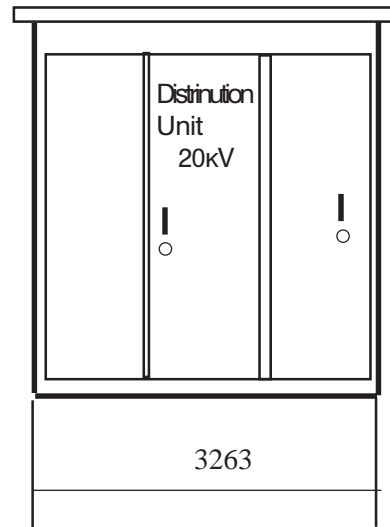
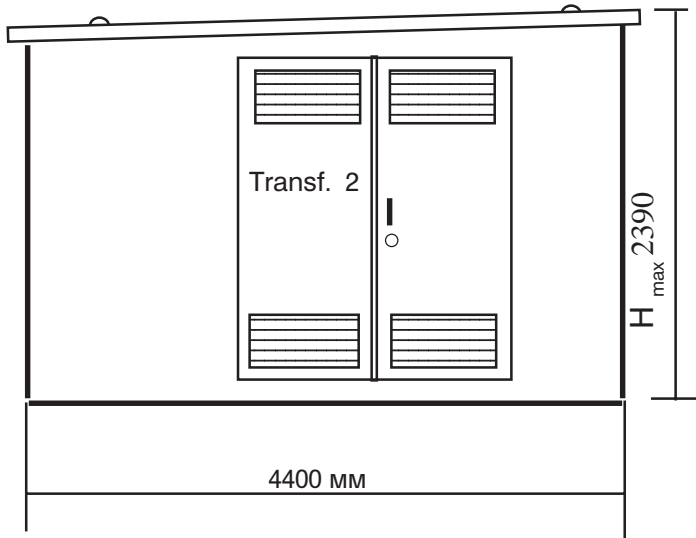


Transformer Substation- P- 2T- RMU- 5 10, 20/0.4kV; up to 2 x800kVA

RMU -SF-6 10, 24 kV ;400,630A ;20,16 kA



Transformer Substation - P- 2T- RMU- PL 10,20/0.4 kV up to 2x800kVA

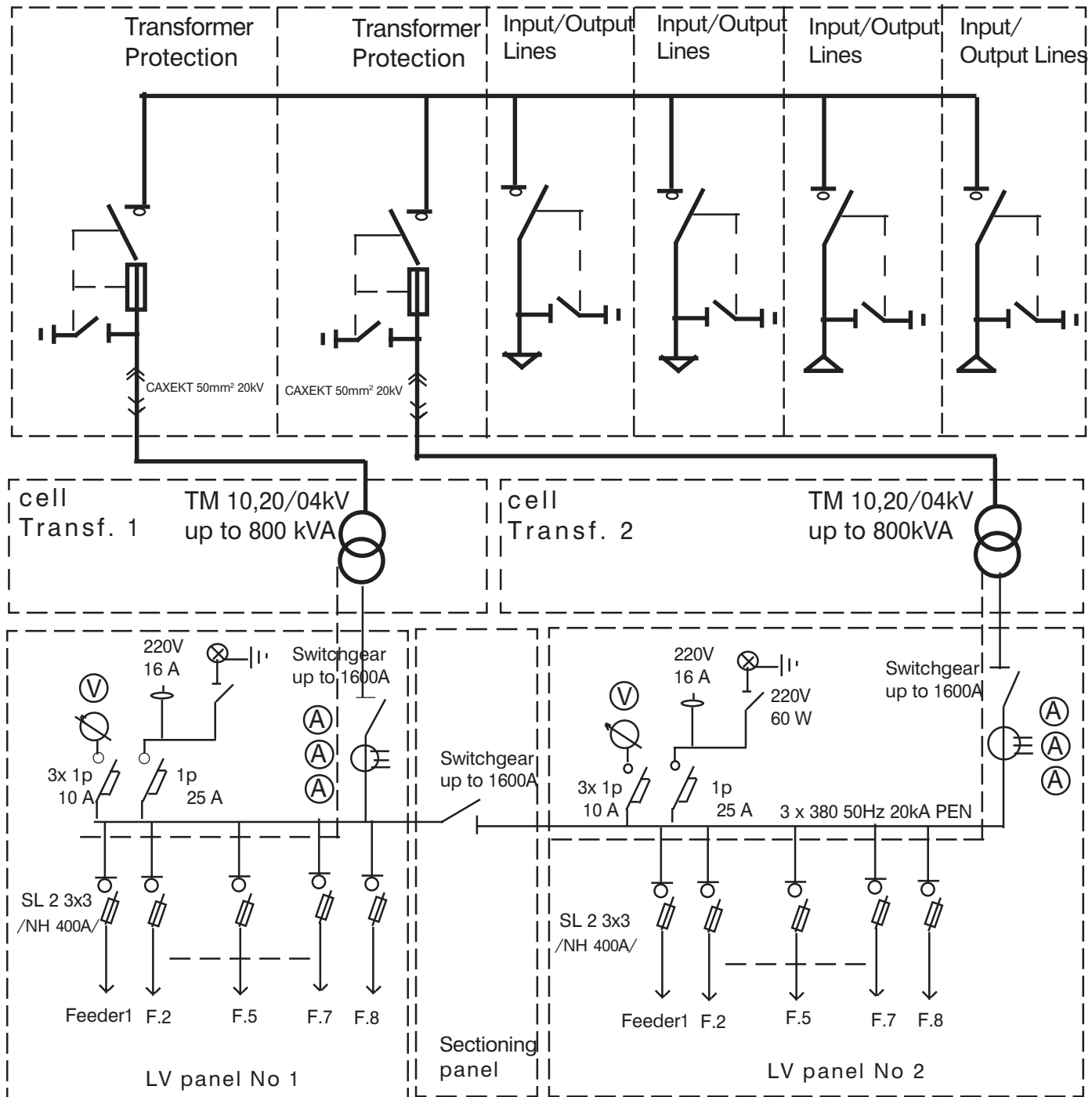


1. Transformer Sections - 2  
Power Oil Transformer  
TM 10,20/0,4kV- up to 800kVA
2. MV and LV Sections
3. Distribution Unit- 0,4/0,231kV
4. RMU SF-6 with functions:
  - Input/Output - up to 4
  - Transformer Protection - 2

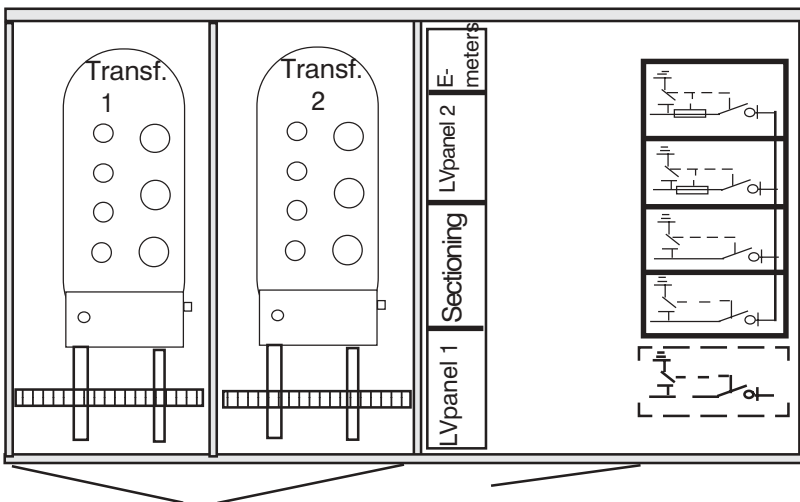
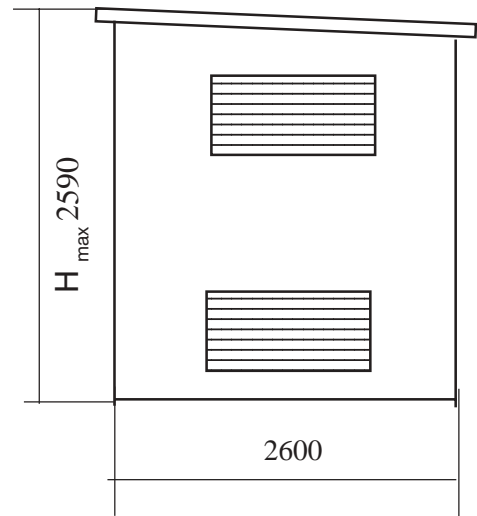
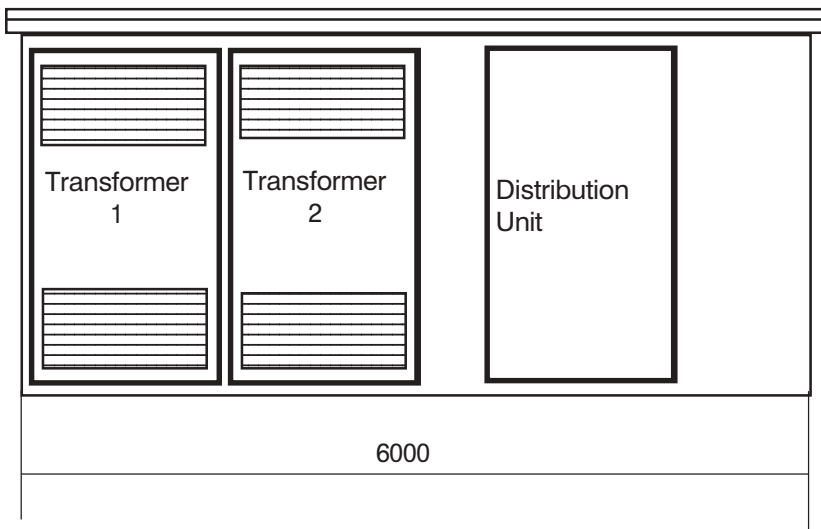
Area - 14,36 sq.m.

Transformer Substation - P- 2T- RMU- PL 10,20/0.4kV; up to 2 x800kVA

RMU -SF-6 10, 24 kV ;400,630A ; 20,16 kA



Transformer Substation - P- 2T- RMU- 5- PL 10, 20/0,4kV 2x1000kVA

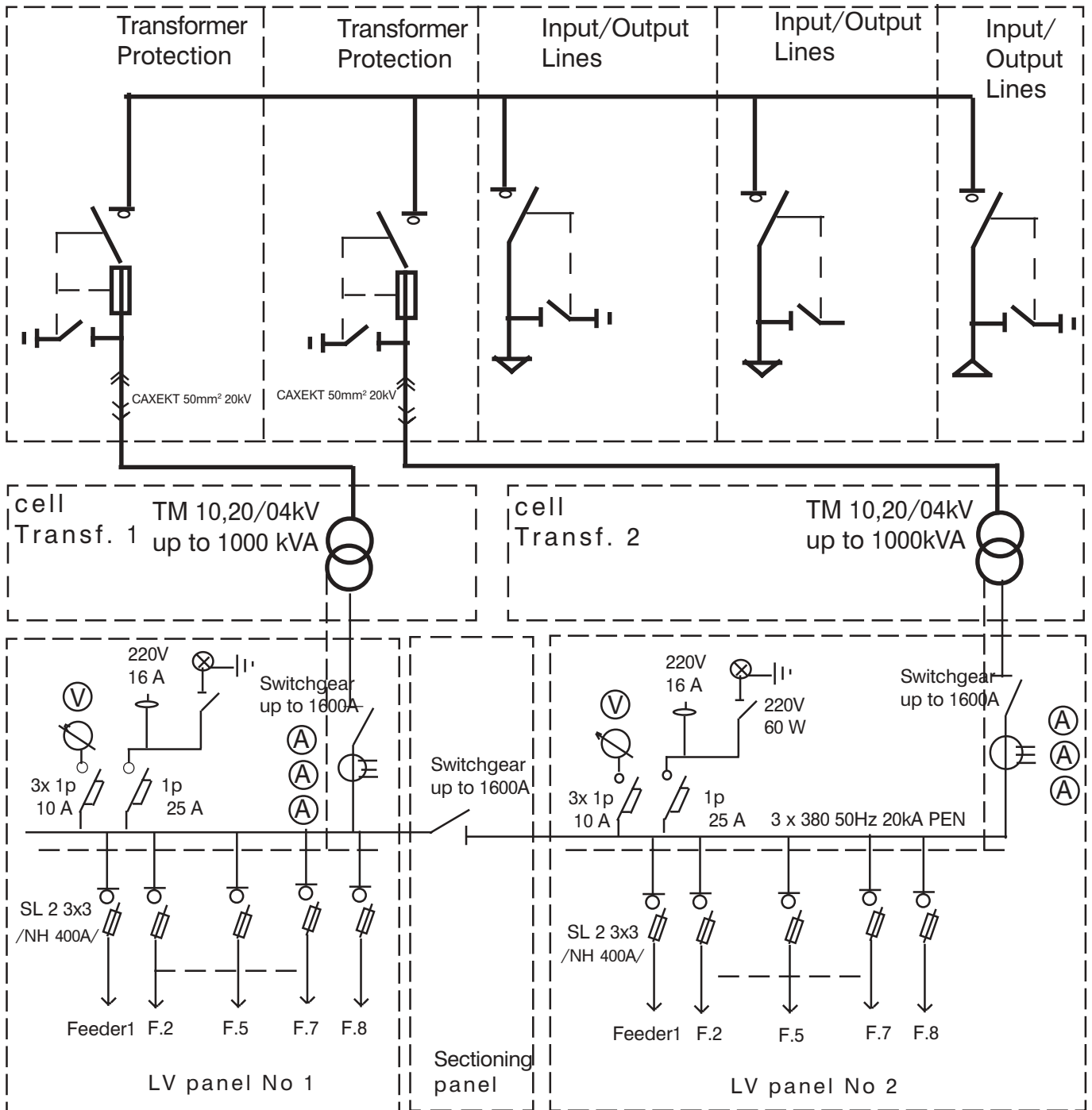


1. Transformer Sections - 2  
Power Oil Transformer  
TM 10,20/0,4kV- up to 1000kVA
2. MV and LV Sections
3. Distribution Unit- 0,4/0,231kV
4. RMU SF-6 with functions:
  - Input/Output - up to 3
  - Transf. protection - 2

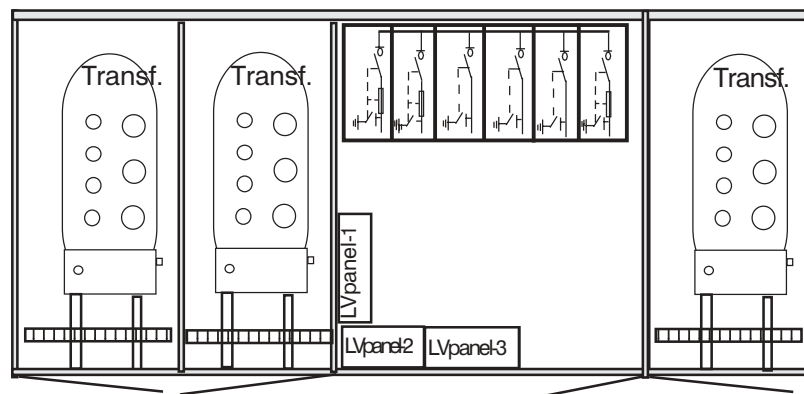
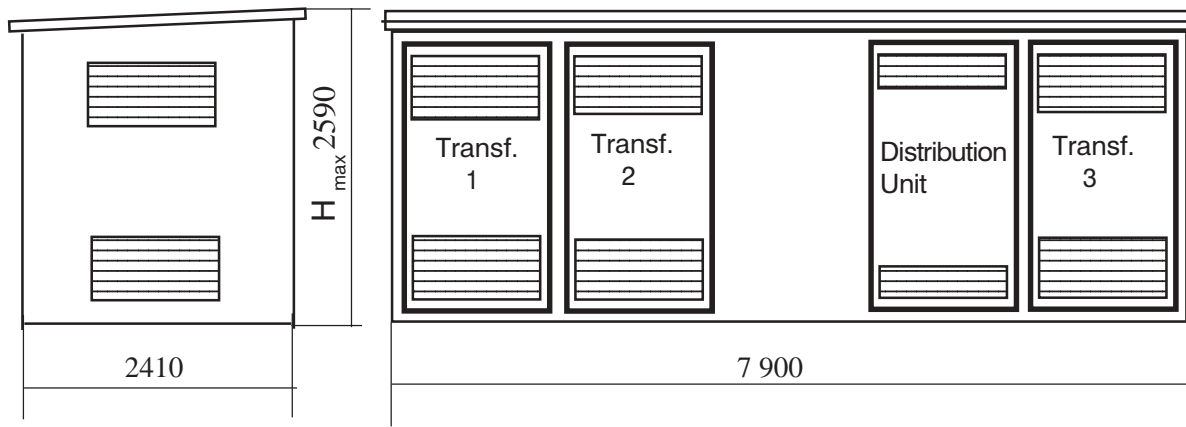
Area- 15,60 sq.m.

Transformer Substation- P- 2T- RMU- 5- PL 10,20/0.4kV; up to 2 x 1000kVA

RMU -SF-6 10, 24 kV ;400,630A ; 20,16 kA



Transformer Substation - P- 3T- RMU- 6 10,20/0,4kV up to 3x800kVA

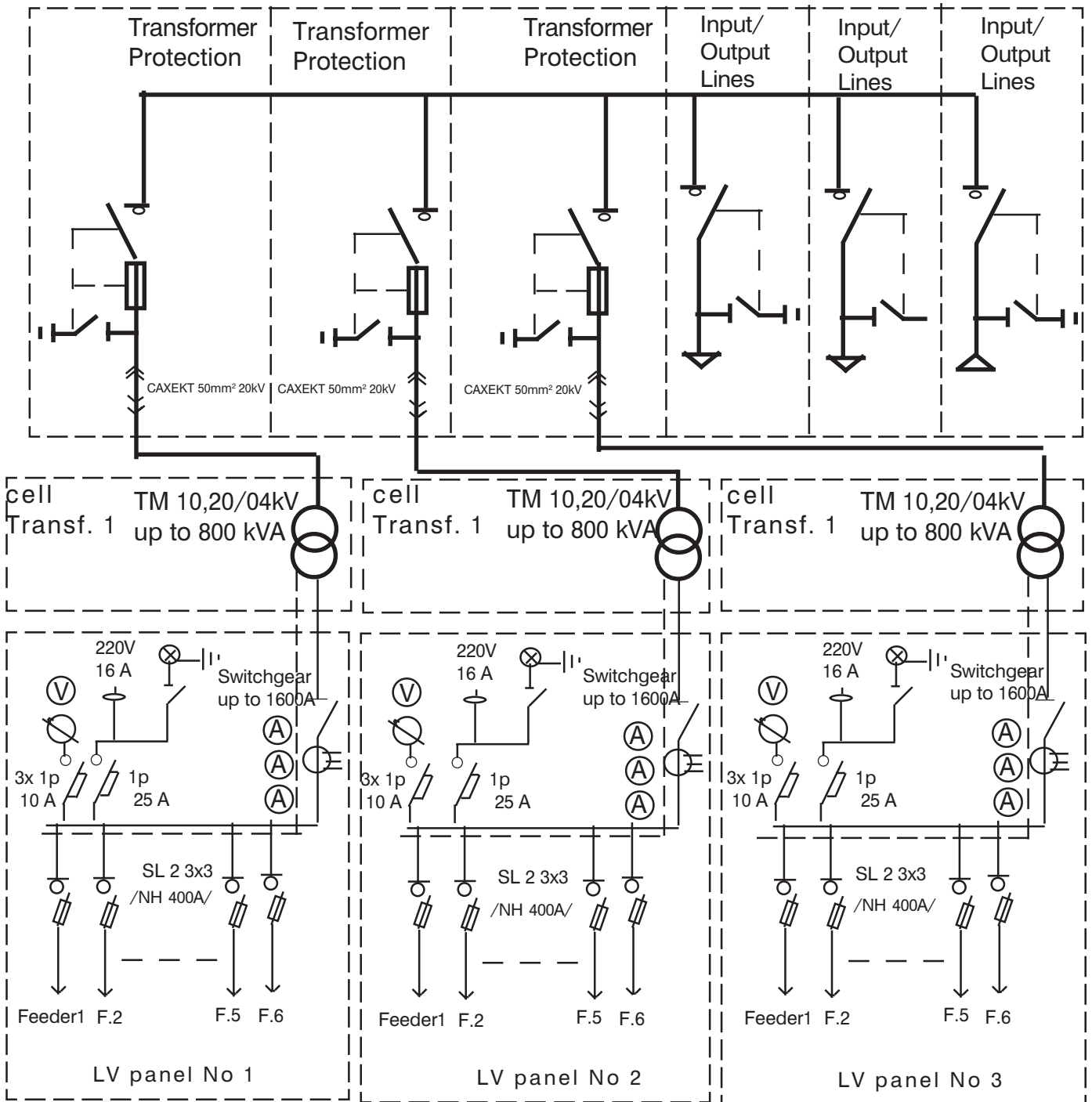


1. Transformer Sections - 3  
Power Oil Transformer  
TM 10,20/0,4kV- up to 800kVA
2. MV and LV Sections
3. Distribution Unit - 0,4/0,231kV
4. RMU SF-6 with functions:
  - Input/Output - up to 3
  - Transf. protection - 3

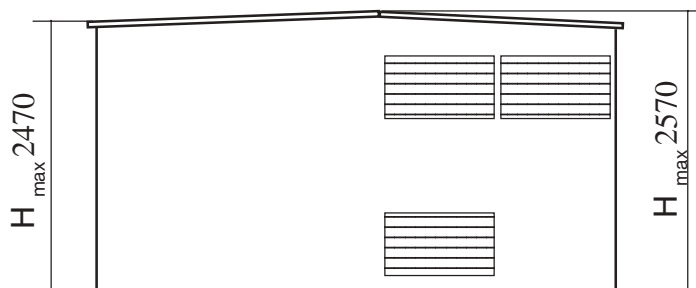
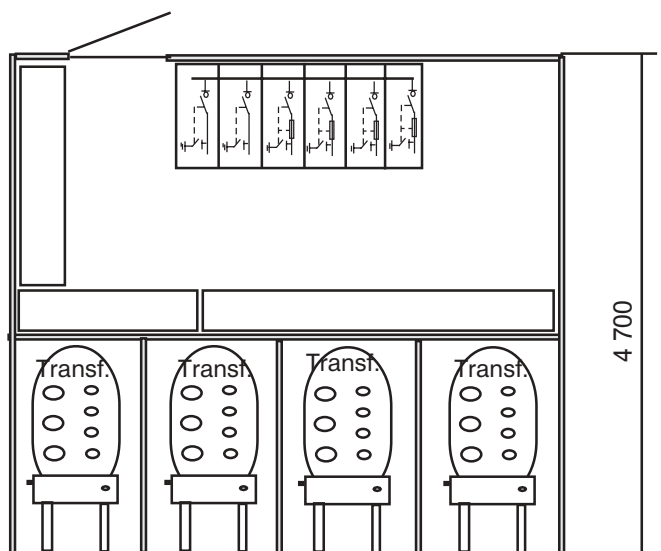
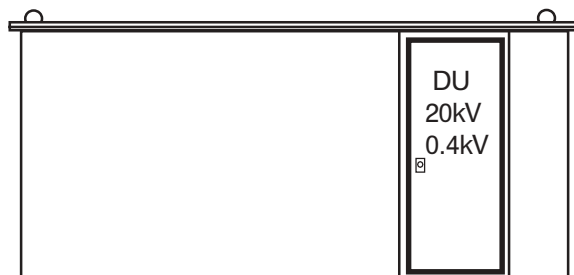
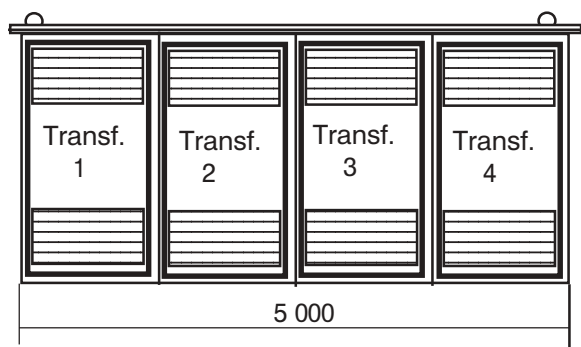
Area- 19,04 sq.m.

Transformer Substation- P-3T-RMU- 6 10,20/0.4kV; up to 3 x 800kVA

RMU -SF-6 10, 24 kV ;400,630A ; 20,16 kA



Transformer Substation- P- 4T- RMU 10, 20/0.4 kV up to 4x630kVA



1. Transformer Sections - 4  
Power Oil Transformer  
TM 10,20/0,4kV- up to 630kVA
2. LV and MV sections
3. DU- 0,4/0,231kV
4. RMU SF-6 with functions:
  - Input/Output - up to 3
  - Transf. protection - 4

Area - 23,50 sq.m.;

Transformer Substation- P- 4T- RMU 10,20/0.4 kV up to 4x630kVA

